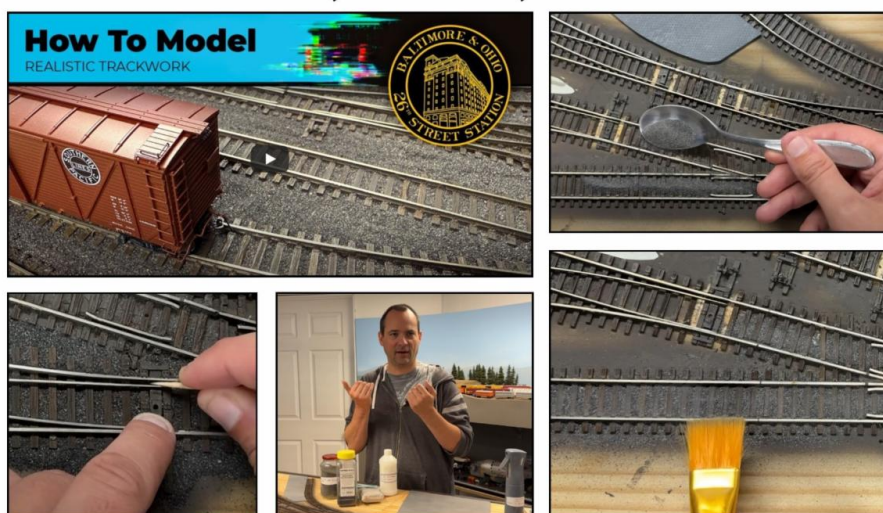


The NMRA's **Turntable** is a monthly publication that, like a railroad turntable, will lead you in several directions on the internet.

This e-publication is a collection of railroad and model railroad videos, podcasts, websites, and/or other information freely available on the internet that we think may be of interest to you. The NMRA claims no ownership of this information, nor do we endorse its creators or their websites. The *NMRA Turntable* will not promote individuals or their for-profit ventures.

Having trouble seeing this email? [View as Webpage](#)

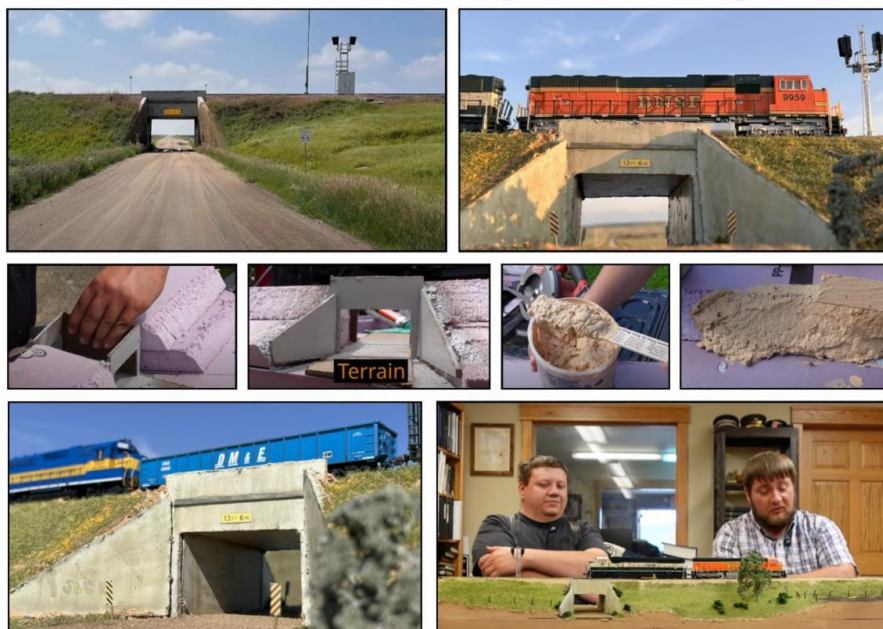
How To Detail, Weather, & Ballast Track



[How To Detail, Weather, & Ballast Track](#)

Level up your model railroad with great-looking trackwork!

Diorama in a Day Challenge



[Diorama in a Day Challenge](#)

James and Jordan decide to put their skills to the test for this video by building a 14.5 by 48-inch HO scale photo diorama for future reviews and product photography. However, they only have one full day to get the project done before they have to get to Madison, South Dakota for the "Trains, Planes, and Automobiles" day at the famous Prairie Village!



America's Largest Operating Model Railroad Show



TRAINFEST®
Baird Center
400 W Wisconsin Ave
Milwaukee, WI 53203

Show Hours:

Saturday, November 1 9:00 am – 5:00 pm
Sunday, November 2 9:00 am – 4:00 pm

Exhibit Floor



Ride Thomas®



Vendor Booths

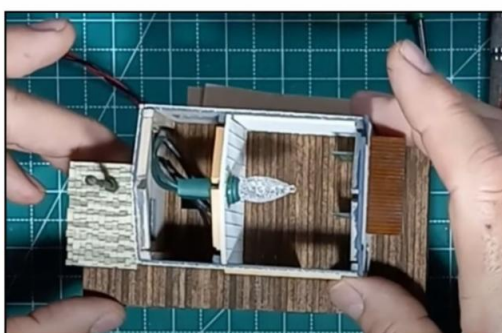


Modeling Demos



TRAINFEST 2025

Building Sincere Towing FOS Scale Kit Of The Month #3



Building Sincere Towing

Kevin Parson builds the Sincere Towing kit from FOS Scale models and customizes it to fit into a waterfront scene on his layout.

Joe Hendrickson's On30 Logging & Mining Layout



[On30 Logging & Mining Layout Tour](#)

Joe Hendrickson's modules were part of the popular California Central Coast (CCC) On30 portable layout that has been a staple at train shows around the Greater San Francisco Bay Area for many years.

The CCC continues, but Joe's modules have been in his purpose-built garage at his home in Morgan Hill, CA, ever since Joe was no longer able to endure the rigors of displaying them at shows. Since the modules are a semi-permanent fixture in Joe's garage, fellow CCC member Dave Gill helped construct reversing loops at each end of the modules to create a continuous run for Joe's models.

Review: Class One Model Works Santa Fe Ce-3 Waycar!



[Class One Model Works Santa Fe Ce-3 Waycar](#)

Wait, this isn't a Caboose? - Unboxing and product review of the Class One Model Works' Santa Fe Ce-3 Waycar!

In the late 1960s, Santa Fe rebuilt 40 older peaked roof waycars (caboosees) into the Ce-3 class. They were numbered 999600 to 999639. Some of these cars lasted in service until the mid-1980s. The model in the review, 999602, was one such car. These cars varied in small details and paint treatment, and Class One has done a good job reproducing these variations. After 999602 was retired, it became a stationary structure in La Junta, Colorado.

This very well-done model matches photos of the real Ce-3 class cars. This car has lighting that is controlled with an included magnetic wand and requires no programming. As usual, Dan evaluates the car's packaging, prototype accuracy, paint & detail, and how well it operates and conforms to applicable standards.

If you're a fan of the Santa Fe, waycars (caboosees), or just trains in general be sure to check out this unboxing and product review!

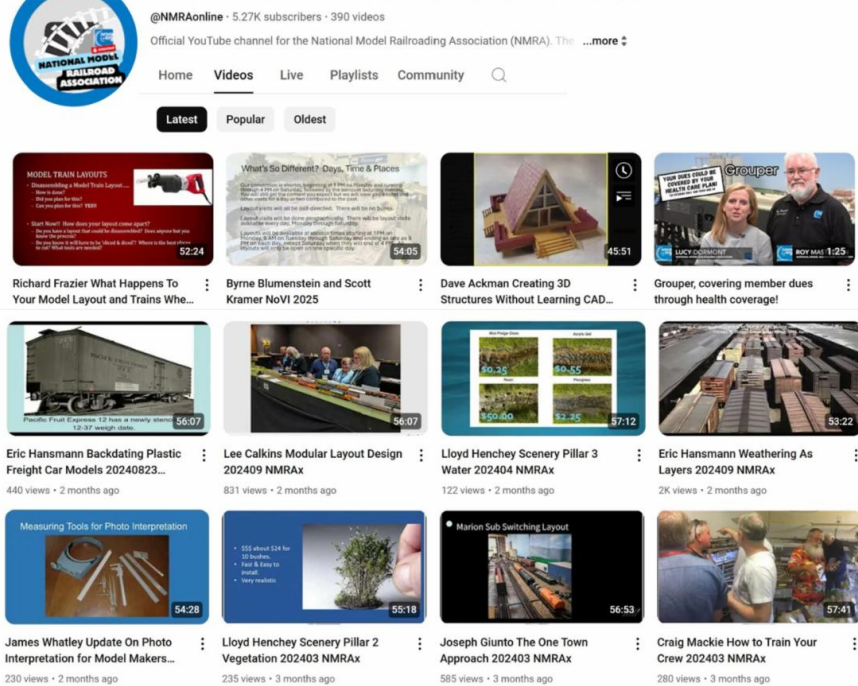
Review: Rapido SP Dome-Lounge SP "Shasta" Daylight Scheme w/ Fluted Sides



Review: Rapido SP Dome-Lounge

Today da-joe-trains takes a look at Rapido's Southern Pacific Dome-Lounge passenger cars in HO Scale! This is the "Shasta" configuration of the second level seating and is painted in the gorgeous Daylight scheme. All cars in this scheme have the fluted sides, other paint variations have the smooth side as an option as well. This model has amazing interior details and very nice lighting, but make sure you have wide curves as it can't run on anything less than 22" radius without truck modifications.

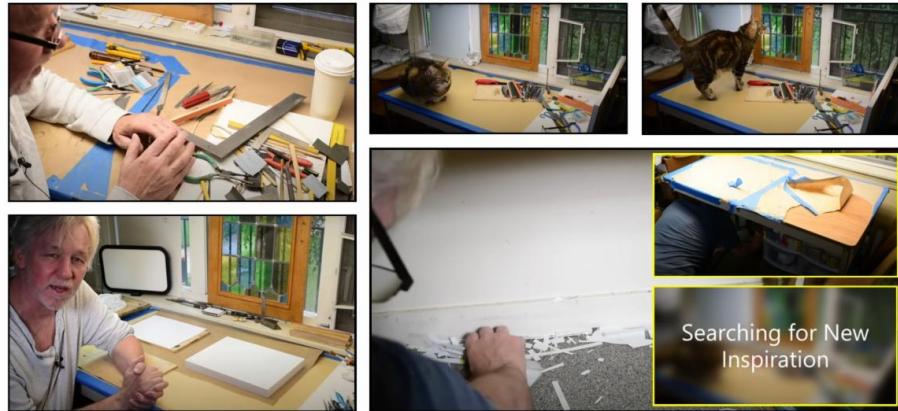
These SP dome-lounges were announced by Rapido in July of 2023, and delivered this month, September 2025. The reviewer grabbed his from Lombard Hobbies and seems like they're selling quick! The Canadian Pacific "Selkirk" is already extremely difficult to find in stock, but if you're looking to model the CP excursion fleet, that's also a must buy!



@NMRAonline

Official YouTube channel for the National Model Railroading Association (NMRA). The channel contains over 390 videos covering a wide range of subjects including how-to projects, railroad history, prototype and model railway operations, and many more subjects. More videos are being added to the collection all the time, mostly through the NMRAX online video presentations that take place every month. Take a look and see what has been added recently!

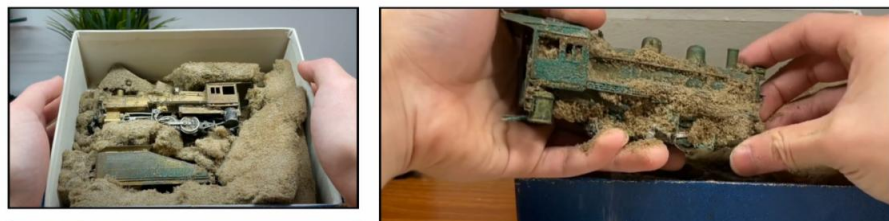
Searching For New Inspiration & Passion



Searching For New Inspiration & Passion

Resetting the modeling bench can often lead to new-found passion and inspiration.

Foam-Damaged Brass Restoration Story





Foam-Damaged Brass Restoration Story

Trainman440 was challenged recently to do a restoration on a brass engine with severe foam damage. In this How-To video he shows tips on how he goes about doing this kind of repair, and what to expect along the way. In this video he restores an HO brass steam locomotive, specifically a Red Ball Brass PRR Pennsylvania B6sb 0-6-0 engine.

Sunshine Region - NMRA



Where modelers come to
share, develop, and learn
new skills.



Sunshine Region's 2025 Annual Convention

OUR BRAND NEW CONVENTION LOCATION

OCALA HILTON
3600 Southwest 36th Ave
Ocala, FL 34474

Thursday October 9th - Saturday October 11th, 2025
(with a member meeting Sunday morning the 12th)

Sunshine Region's 2025 Annual Convention



IRON HORSE 2025

The Sunshine Region of the NMRA invites you to our new convention home at the Ocala Hilton in beautiful Ocala Florida, known as The Horse Capital of the World®, for Iron Horse 2025!

Enjoy numerous hands-on activities, clinics, op sessions, contests, meet and greet, fellowship and more. The convention will run from 4pm Thursday October 9, 2025, to Saturday October 11, 2025, 11pm (or when the banquet breaks up).

Touring Anthony's HO Scale Georgia Sun Belt Railroad





Georgia Sun Belt Railroad Tour

On August 24th, the videographer and his wife traveled to Maryland to visit a couple of great model railroaders. This video highlights Anthony and his Georgia Sun Belt Railroad. The pair needed to see it before it is gone as Anthony plans on moving to Georgia soon and he will be dismantling this one to start a new one in his new home.

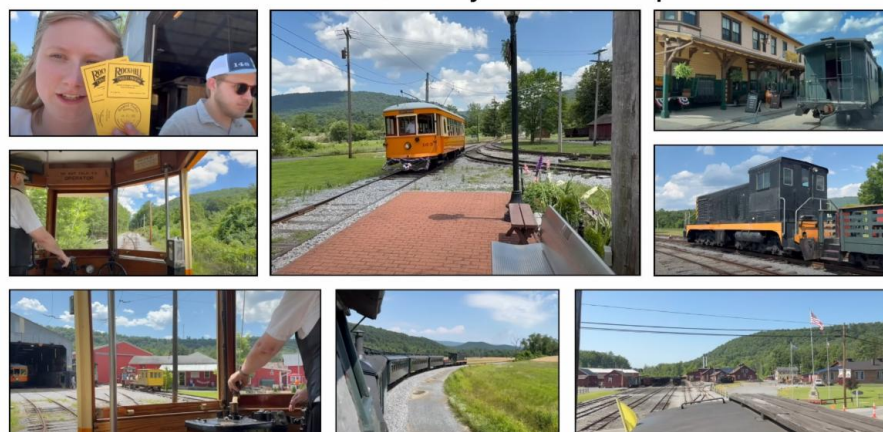
My last day in Novi, Michigan The NMRA Model Train Show



The NMRA Model Train Show

Pedro Spicer's last day at this year's NMRA National Convention in Novi, Michigan, was spent at the National Train Show.

Rockhill Trolley Museum & the East Broad Top RR Lauren Osier's Pennsylvania Video Trip



Rockhill Trolley Museum & the East Broad Top RR

Follow along for the first few days of the Osier couple's Pennsylvania trip, which were spent at East Broad Top and the Rockhill Trolley Museum. At East Broad Top, they rode the diesel-pulled train, the M-1, and a speeder. They also had a tour of the archives, shop, and a special tour of the rest of the line. The Rockhill Trolley Museum is also a wonderful addition to your trip if you are visiting EBT. They will definitely have to make a trip back once EBT has steam going again!

Tennessee Valley Railroad Museum



Tennessee Valley Railroad Museum

This was D D. Greene Films' 7th visit to the Tennessee Valley Railroad Museum in Tennessee. The date of this production was 9-24-2023 at 9:00am on Sunday.

 PARTNERSHIP PROGRAM		Old Depot Gallery Old West Scenery *Precision Model Railroad* R & J Details R. Duck Woodkits, LLC and R. Duck Locomotive Works *RailroadKits & Microlumina*
18Ten Designs Bespoke Rail CatzPaw Innovations CB Train Junction Clever Models, LLC CMR Products, LLC Coastmans Scenic Products Composite Designs, Inc. Conowingo Models Cowcatcher Magazine Dark Sky Modules, LLC Daylight Sales (Merchandise) Deepwoods Software Deluxe Materials Diorama Hobbies Dwarvin Enterprises, Ltd East Coast Circuits *East Plaines Weathering Co.* Enterprise and National Car Rental Services Evan Designs EZTronic Feight Studios Fusion Scale Graphics Gatorfoam Golden Spike Hobbies Great Decals! Green Frog Productions Highways and Byways Model Railroad Graphics	Hot Wire Foam Factory Ipswich Hobbies ITLA Scale Models K.I.S.S Method, Inc. Klawndyke LaBelle Woodworking Co. LARC Products Leavin' A Mark Engraving Lineside Details Logic Rail Technologies MAC Rail Marker Tree Creations Micro-Mark Mid-South Hobbies Mine Mount Models, LLC Miniprints Mississippi Agriculture & Forestry Museum Model Train Catalogue Modelers Decals & Paint Motrak Models Model Rectifier Corp (MRC) MrTrain.com Mudd Creek Models New Creations Victorian Railroad Buildings Nick and Nora Designs Northlandz NScale Works by Mike Holly	RAM Track RR-CirKits Scale Model Plans Scale Railroad Models Scenery Solutions Showcase Miniatures T-Trak by Denniston Team Track Models The Model Railroad Benchwork Store The N Scale Architech The Old Depot Gallery Third & Townsend Models Tichy Train Group Touch of the Brush Model Weathering Train Installations, LLC Train Show, Inc. Trainmasters TV/Model Railroad Hobbyist Store TRAINZ.com TSG Multimedia UGEARS USA Airbrush Supply/ Badger Airbrush Wallace Locomotive Works White Rose Hobbies, LLC WiFi Model Railroad, LLC Yelton Models

[New Partners in RED*]

June 2025

Partnership Program Member List



2026 NMRA NATIONAL CONVENTION CHATTANOOGA, TENNESSEE JULY 27 TO AUGUST 2, 2026



Early Bird Registration is Now OPEN!

The NMRA National Convention is coming to Chattanooga, TN for the first time ever in 2026! The Southeastern Region is excited to host NMRA members from around the world in the Scenic City. We have a week full of fun activities planned including:

- Layout Tours
- Prototype Tours
- Steam-Powered Excursions and Dinner Train
- Non-Rail Tours and other Activities
- Operating Sessions
- Special Interest Groups
- Railroad Historical Societies
- Modeling with the Masters®
- Celebration of Models
- Train Show
- Banquet

Early Bird Registration is Now OPEN!



Region & Division News by Jim Zinser, MMR®

Journey's End

The Division Business Car is heading into the station to make its last stop for 2024. But before we disembark, I'd like to thank everyone who's made these bi-monthly journeys possible. First, thank you to all the authors and newsletter editors who've provided the content that makes up this column. Without you, I'd literally have nothing to say!

Next, big thanks to NMRA *MAGAZINE* Editor Cynthia Priest, who makes this and every column and article in every issue look and read so well.

Also, big thanks to proofreaders Bob Hans, Laura Hughes, Steve Marquess, Lloyd Thompson, and Jim Wilson, who make grammatical and spelling errors disappear like magic.

Then there's the "Poster Boy," Chuck Diljak, MMR®. He's the guy who extracts and reformats the articles from the newsletters I feature and posts them on the NMRA.org website for you to read.

Finally, thank you to all of you for reading the column and for taking the time to email me with your comments and suggestions for improving it.

From my family to yours, may 2025 bring peace, happiness, health, and a better world for us all. 🌍

Division Business Car Archives

Previous issues of the **NMRA Turntable** are available on the Turntable Archives page. You must first log in as a member at: nmra.org. After you are in the members-only section, then you must hover over 'Publications' on the menu bar, then 'NMRA Turntable', and then click on one of the list of back issues.

Editor: [Paul Voelker, HLM](#)

Executive Editor: [Rick Coble](#)

([Riley Triggs](#) Manager). Its purpose is to introduce NMRA members to a selection of instructional videos and online publications that they may find of interest. If you know of an NMRA member who is not receiving this mailing, please direct them to [here](#) to update their email address. If you no longer wish to receive these mailings, please don't mark them as SPAM. Instead, click the Safe Unsubscribe link at the bottom of this page. ©2021 National Model Railroad Association, Inc., P.O. Box 1328, Soddy Daisy TN 37384.